



📍 5 Bolwell Court New Park Street, Devizes, Wiltshire, SN10 1DT

🏠 £900

- 1-bedroom terraced home
- In the heart of the town centre
- Available now
- Well-presented throughout
- Open plan kitchen/diner/lounge
- Light and bright accommodation
- Modern bathroom
- Good sized bedroom



🏠 EPC Rating C



This well-presented one-bedroom mid-terrace home is ideal for those seeking the convenience of town centre living. Ideally positioned in the heart of Devizes, it is just a short stroll from the vibrant market place with its array of shops, cafés, restaurants, and amenities, as well as charming historic streets and scenic canal walks.

The ground floor features a spacious and inviting open-plan kitchen, reception, and dining area, creating a bright and sociable living. The kitchen is well laid out with ample storage and work surfaces, while the open-plan design allows flexibility in furniture arrangements to suit individual needs.

Upstairs, a generous double bedroom spans the depth of the property and is complemented by a well-appointed bathroom with bath and shower over.

Perfect for a single professional or a couple. Available immediately, £900pcm, unfurnished, (sorry, no pets)

### **Situation**

### **Property information**

Electric heating, we are advised mains water, electric and drainage are connected.

Whilst no parking is allocated with the property, there are options for permit parking available nearby.

Council tax band: B

EPC rating: C



Denotes restricted  
head height

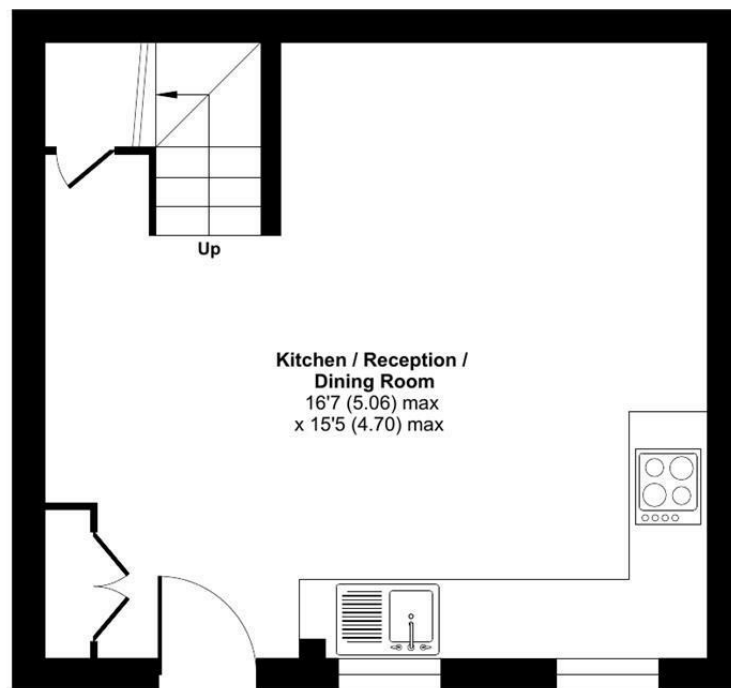
## New Park Street, Devizes, SN10

Approximate Area = 413 sq ft / 38.3 sq m

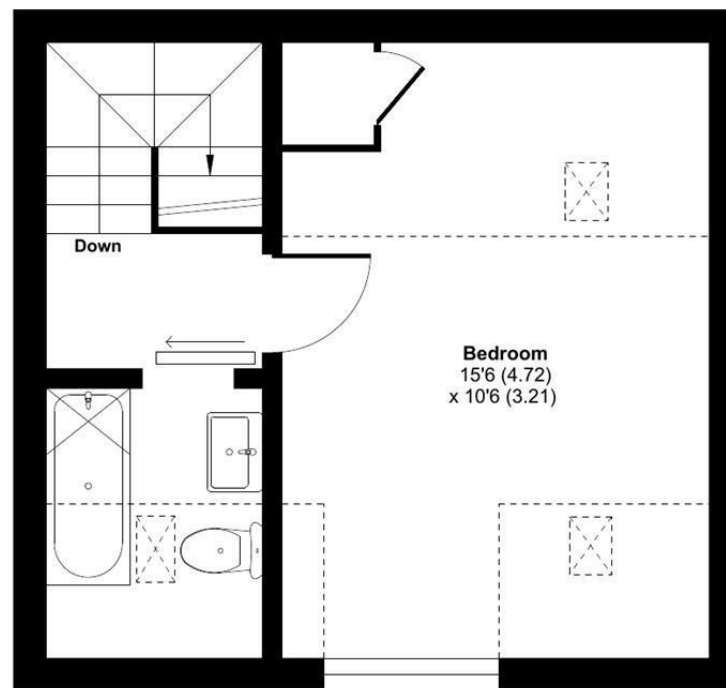
Limited Use Area(s) = 99 sq ft / 9.1 sq m

Total = 512 sq ft / 47.4 sq m

For identification only - Not to scale



**GROUND FLOOR**



**FIRST FLOOR**



Floor plan produced in accordance with RICS Property Measurement 2nd Edition, Incorporating International Property Measurement Standards (IPMS2 Residential). © nitchecom 2025. Produced for Strakers. REF: 1331130

**Disclaimer** These particulars, whilst believed to be accurate are set out as a general outline only for guidance and do not constitute any part of an offer or contract. Intending purchasers should not rely on them as statements of representation of fact, but must satisfy themselves by inspection or otherwise as to their accuracy. No person in this firm's employment has the authority to make or give any representation or warranty in respect of the property. All measurements and distances are approximate only. Your home is at risk if you do not keep up repayments on a mortgage or other loan secured on it.